



**SUBTROPICAL CITIES 2011**

broward **MPO**  
metropolitan planning organization

# **LEGACY PROJECT WORKSHOP**

## **Focus on Fort Lauderdale: Next 100 Years**

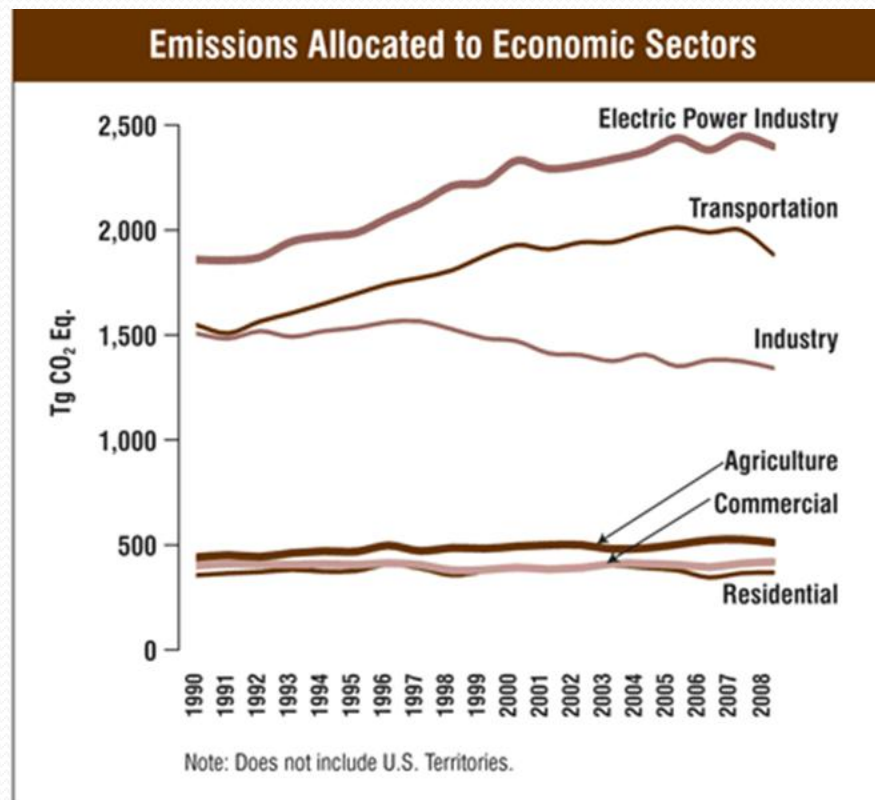
### **Transportation and Land Use**

**Gregory Stuart, Executive Director**  
Broward Metropolitan Planning Organization

**March 11, 2011**  
Fort Lauderdale, Florida

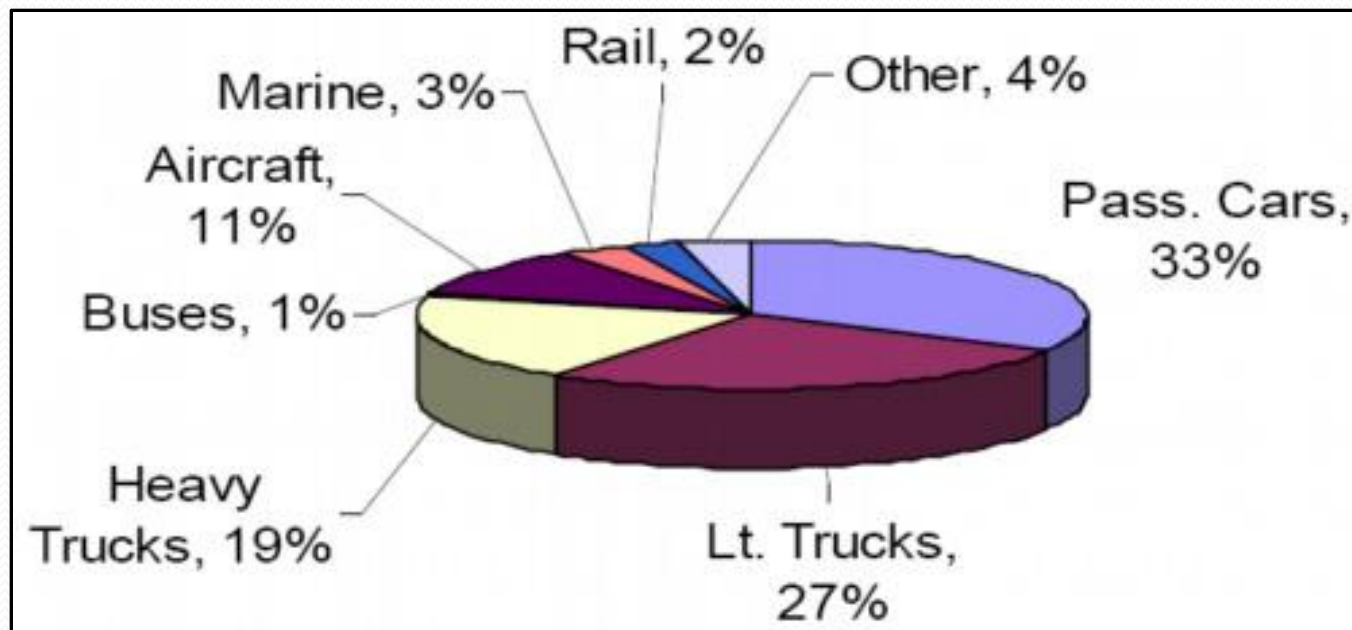
# U.S. Emissions Trends 1990-2008

Transportation accounts for 27% of Greenhouse Gas Emissions



Reference: Inventory of U.S. Greenhouse Gas Emissions and Sinks:  
1990-2008, USEPA #430-R-10-006

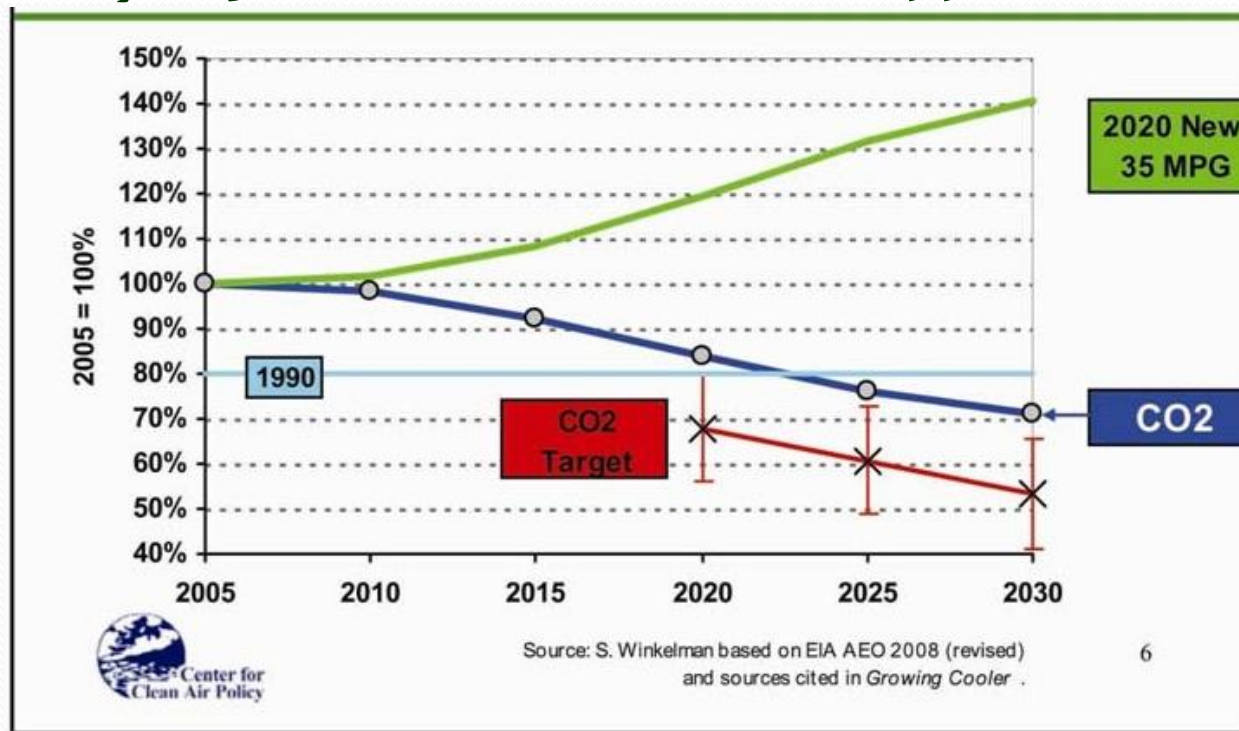
# Greenhouse Gas Generators By Vehicle Type



Testimony Before the National Surface Transportation Policy and Revenue Study Commission,  
March 19, 2007

# Obama Administration Regional Greenhouse Gas Reduction Goals

- By 2050, reduction to 80% of 1990 levels.



35 MPG = 2020  
CAFE standards for  
new vehicles.

By 2030, CO<sub>2</sub> 11%  
below 1990 levels.

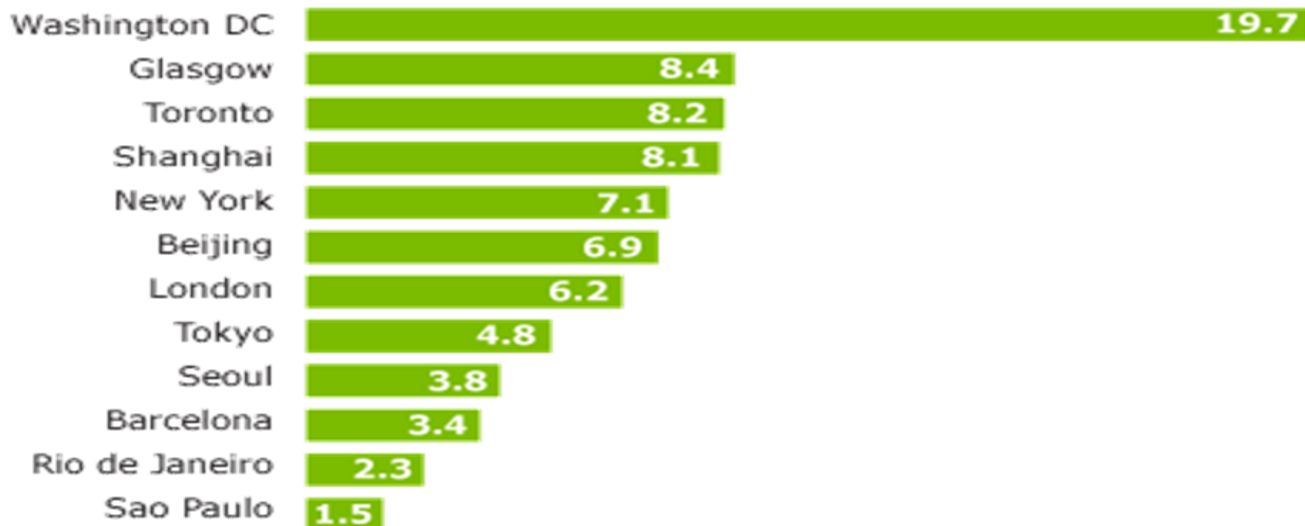
Not enough to  
meet 2050 goal.

# City dwellers have smaller carbon footprints, study finds

Greater use of public transport and denser housing make urbanites more eco-friendly than their rural counterparts

## The big smoke

Greenhouse gas emissions per capita (tonnes of CO2 equivalent)



Greenhouse gas emissions per capita (tonnes of CO2 equivalent). Source: Guardian/IIED

Adam Vaughan

[guardian.co.uk](http://guardian.co.uk), Monday 23 March 2009 13.12 GMT





Local conditions are more important than global averages.

Sea Level Rise  
Storms

Temperature Changes  
Precipitation

# Challenges – Geography

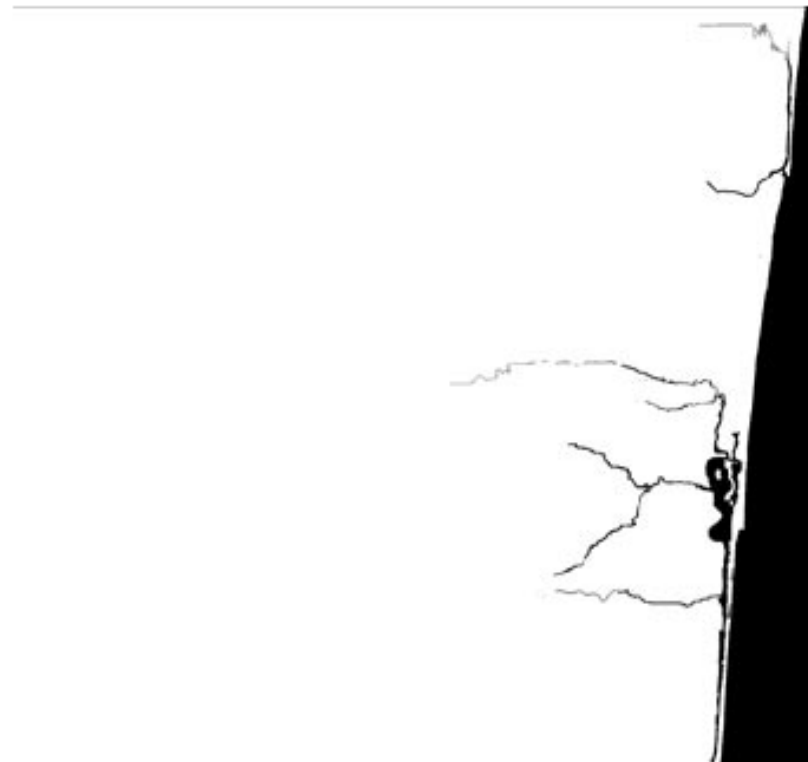


- Prehistory to 1700s

context | history of public space

## A mapping of the history of development in Broward County

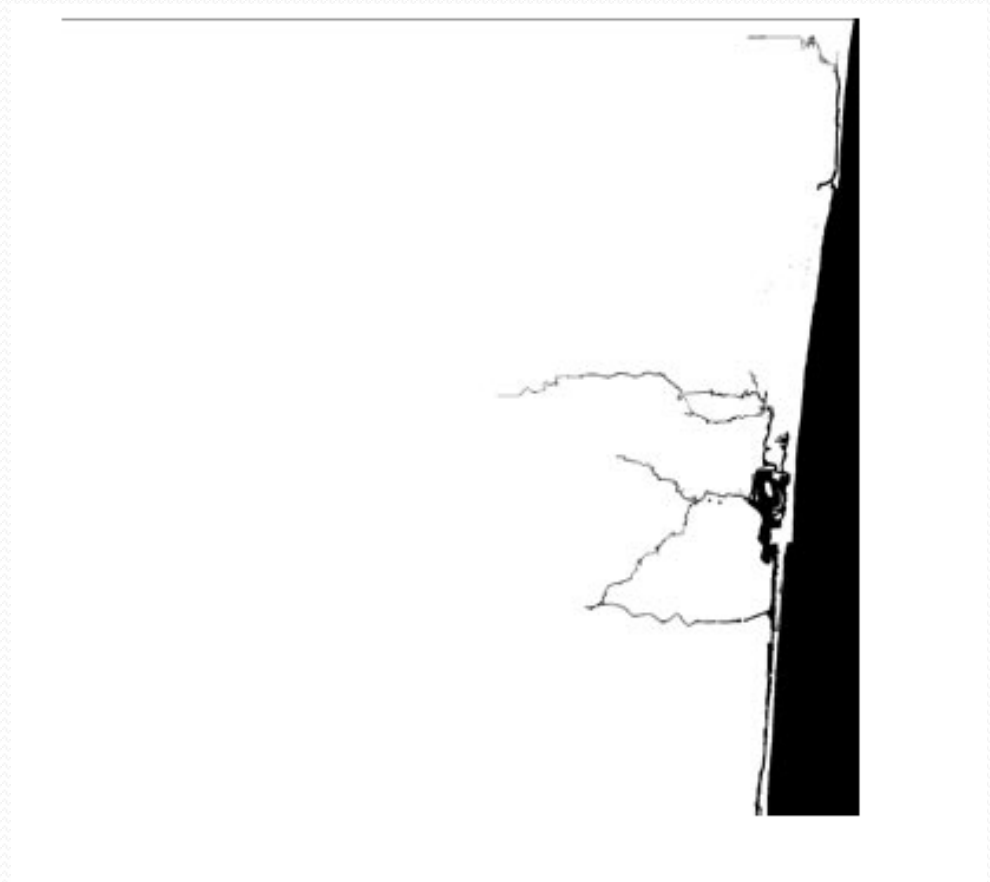
□ | **B**  
DATE | 1.17



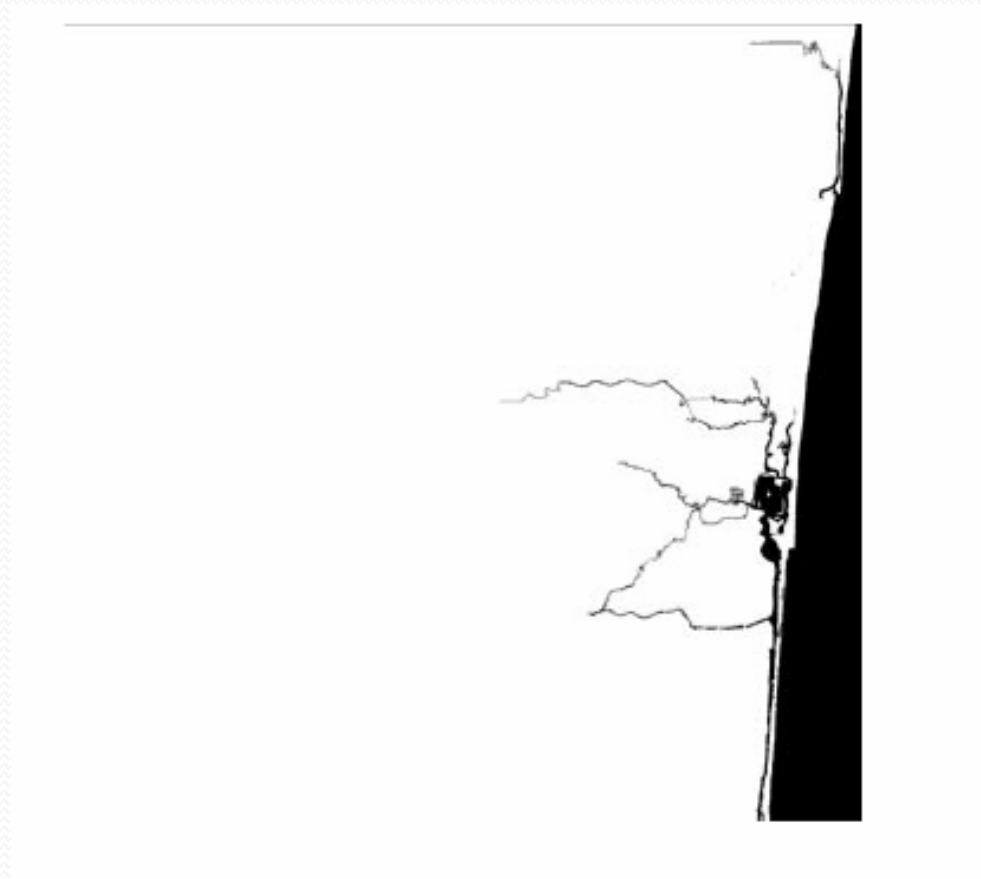
BROWARD COUNTY COUNTY-WIDE COMMUNITY DESIGN GUIDEBOOK  
BROWARD COUNTY BOARD OF COUNTY COMMISSIONERS | ANTHONY ABBATE ARCHITECT PA



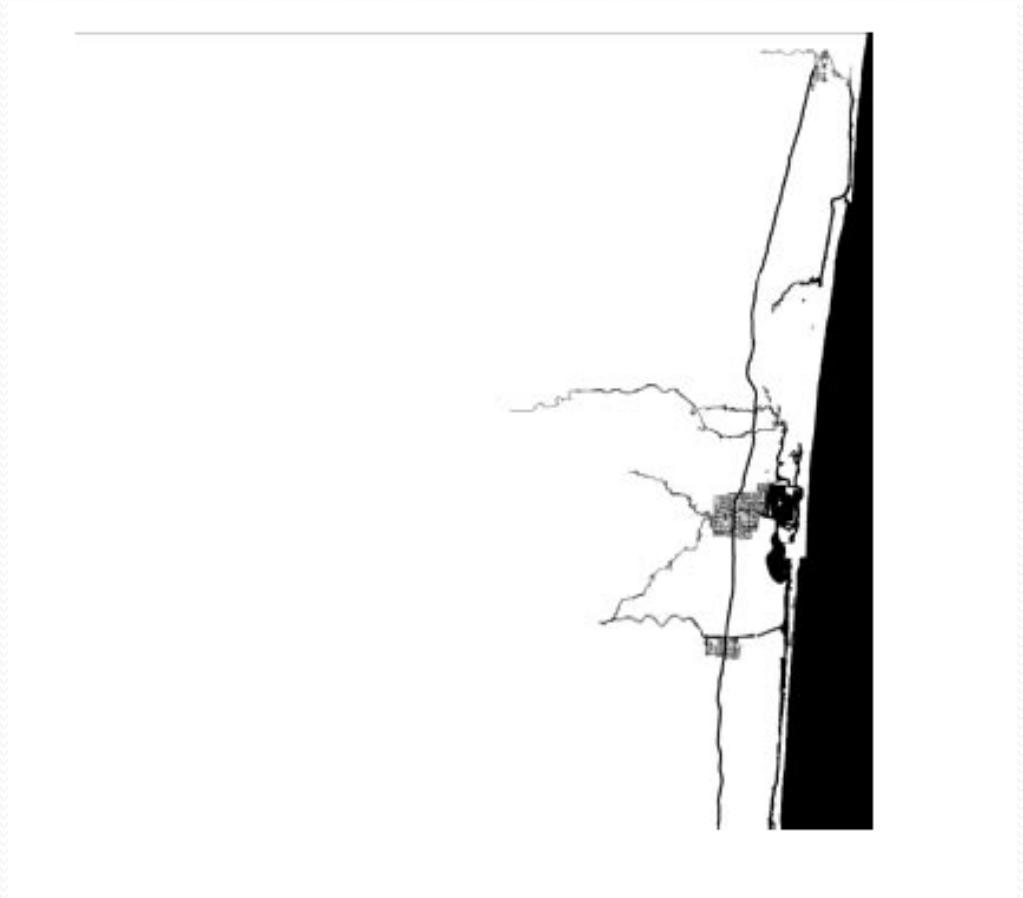
• 1790



• 1895



● 1915



● 1924





● 1930s



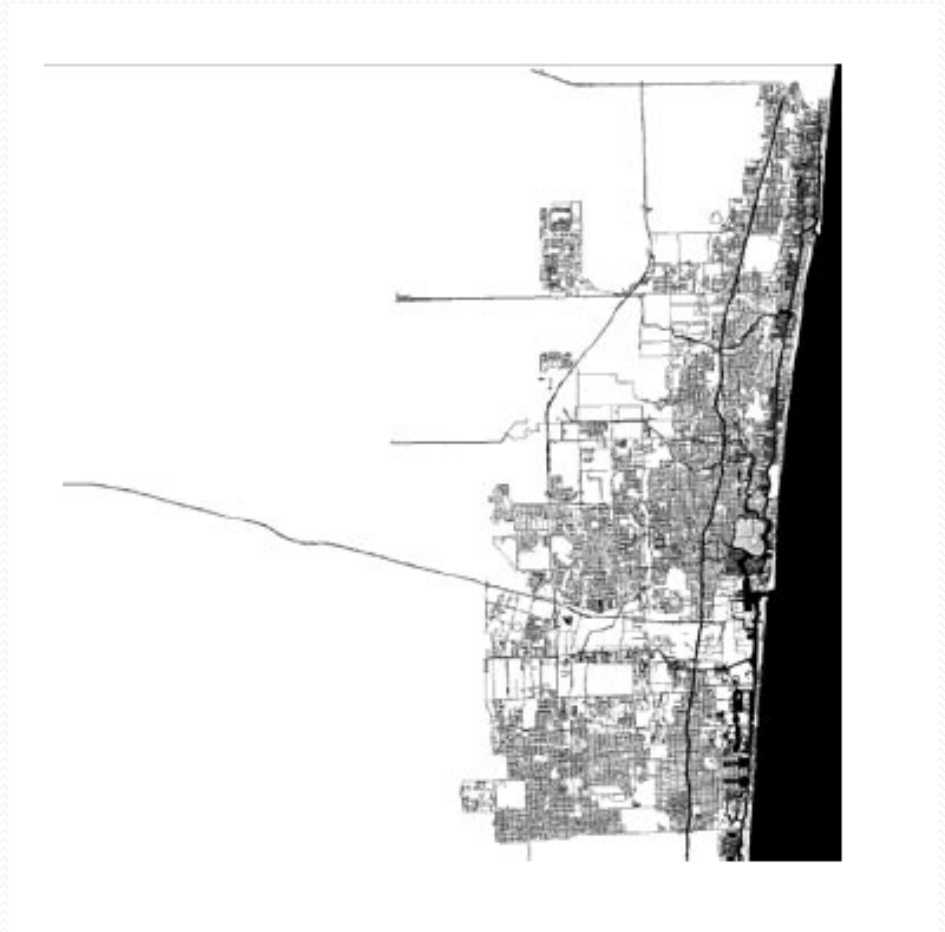
● 1940s



● 1951



- 1965





# Galt Ocean Mile, Fort Lauderdale 1960





# Galt Ocean Mile, Fort Lauderdale

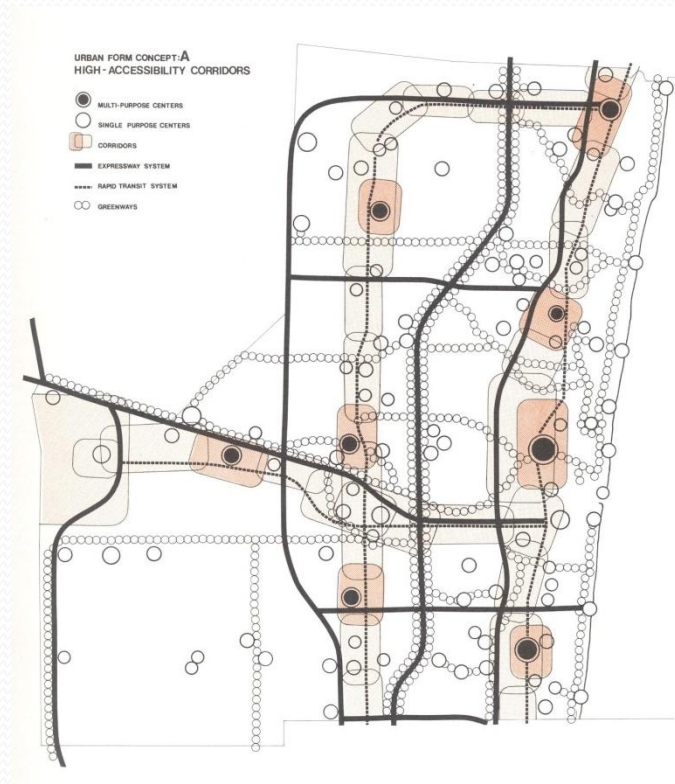
## 1972



Galt Ocean Mile, 1960-1972

# Urban Design Study (Created 1972) for the Broward County Area Planning Board

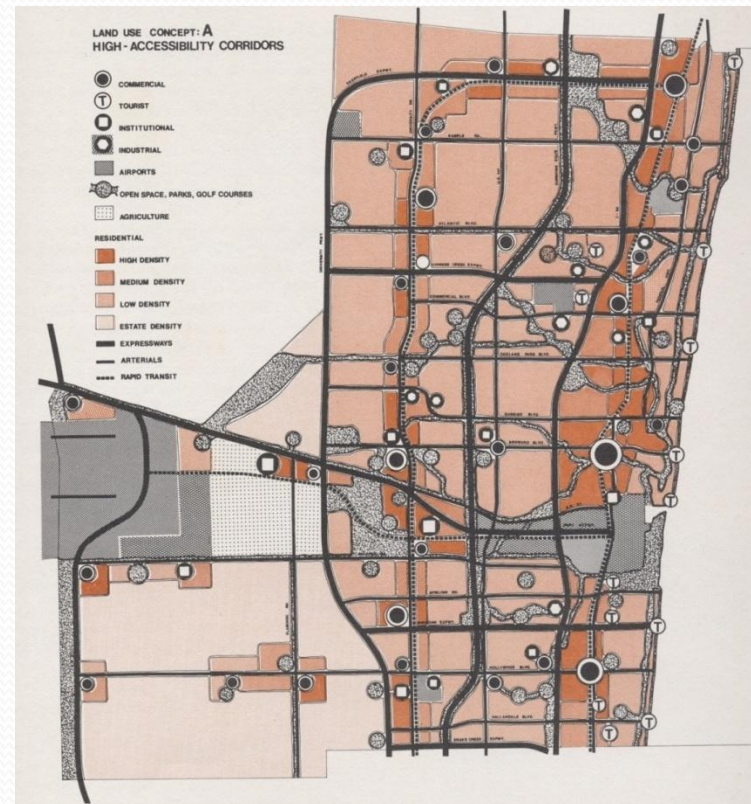
- Multi-Purpose Centers
- Rapid Transit System
- Airport to the west





# Urban Design Study (Created 1972) for the Broward County Area Planning Board

- Centers interconnected
- High density in east
- Very low density in west





- 1970s



- 1980s



● 1990s

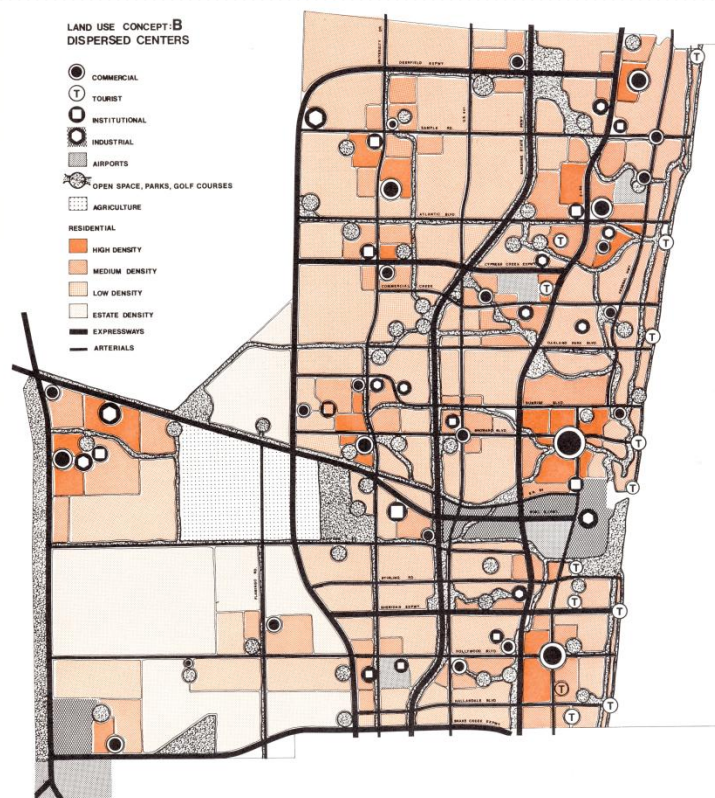


● 2002





# Plan achieved



# FUTURE LAND USE

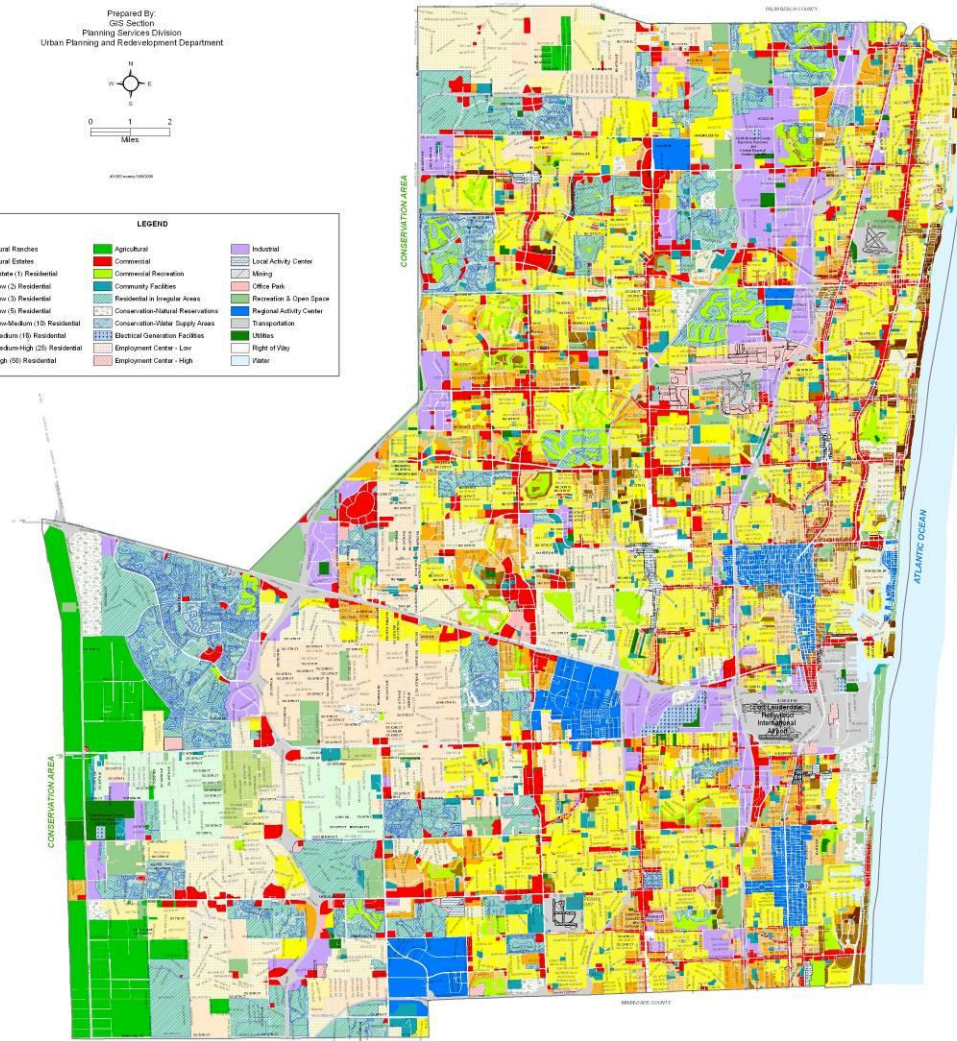
Prepared By:  
GIS Section  
Planning Services Division  
Urban Planning and Redevelopment Department



#1070 (Rev. 05/08/2008)

## LEGEND

Rural Ranches	Agricultural	Industrial
Rural Estates	Commercial	Local Activity Center
Estates (1) Residential	Commercial Recreation	Mining
Low (2) Residential	Community Facilities	Office Park
Low (3) Residential	Residential in Irregular Areas	Recreation & Open Space
Low (4) Residential	Conservation/Natural Reservations	Regional Activity Center
Low-Medium (10) Residential	Conservation/Water Supply Areas	Transportation
Medium (16) Residential	Electrical Generation Facilities	Utilities
Medium-High (20) Residential	Employment Center - Low	Right of Way
High (50) Residential	Employment Center - High	Water



This map is for conceptual purposes only and should not be used for legal boundary determinations.



# How the Region Compares

Palm Beach

Broward

Miami-Dade

Monroe	Miami-Dade	Broward	Palm Beach	Martin	St. Lucie	Indian River
5 cities	35 cities	31 cities	38 cities	4 cities	3 cities	5 cities
	Miami Urbanized Area			Port St. Lucie UA		Vero UA
	MPO	MPO	MPO	MPO	TPO	MPO
	Southeast Florida Transportation Council (SEFTC)			Treasure Coast Transportation Council		
FDOT District VI		FDOT District IV				
Rail Enterprise						
Turnpike Enterprise						
	South Florida Regional Transportation Authority/Tri-Rail					
MCT	MDT	BCT	Palm Tran	COAM	COASL	SRA
	MDX					
South Florida RPC			Treasure Coast Regional Planning Council			

[www.browardMPO.org](http://www.browardMPO.org)

broward **MPO**  
metropolitan planning organization

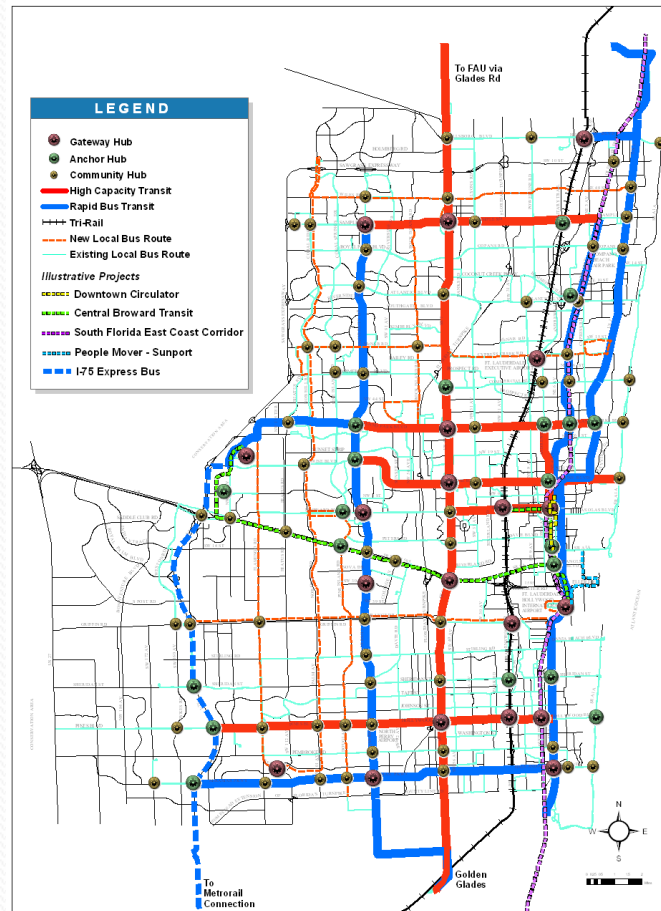
# Broward MPO Vision

*Transform transportation in Broward County to achieve optimum mobility with emphasis on mass transit while promoting economic vitality, protecting the environment, and enhancing quality of life.*

-- 2035 Broward "Transformation"  
Long Range Transportation Plan



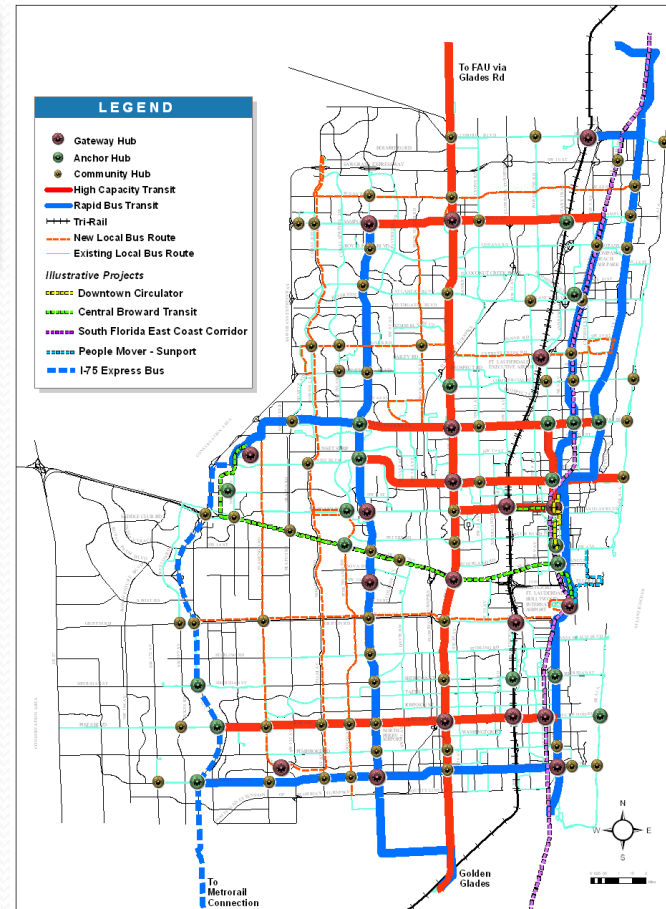
# 2035 Long Range Transportation Plan





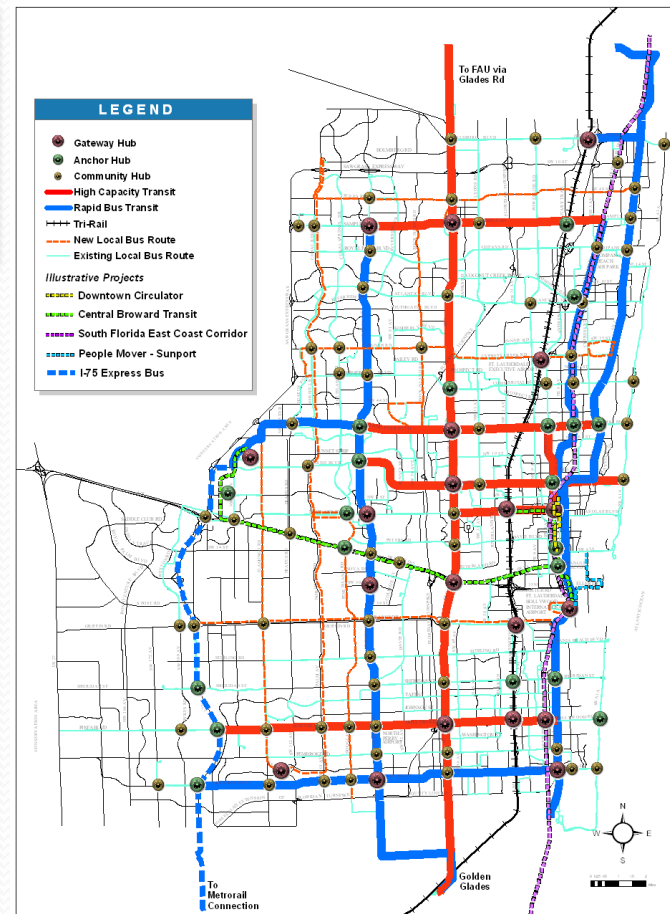
# 2035 Long Range Transportation Plan

## High Capacity Transit



# 2035 Long Range Transportation Plan

## Rapid Bus Transit

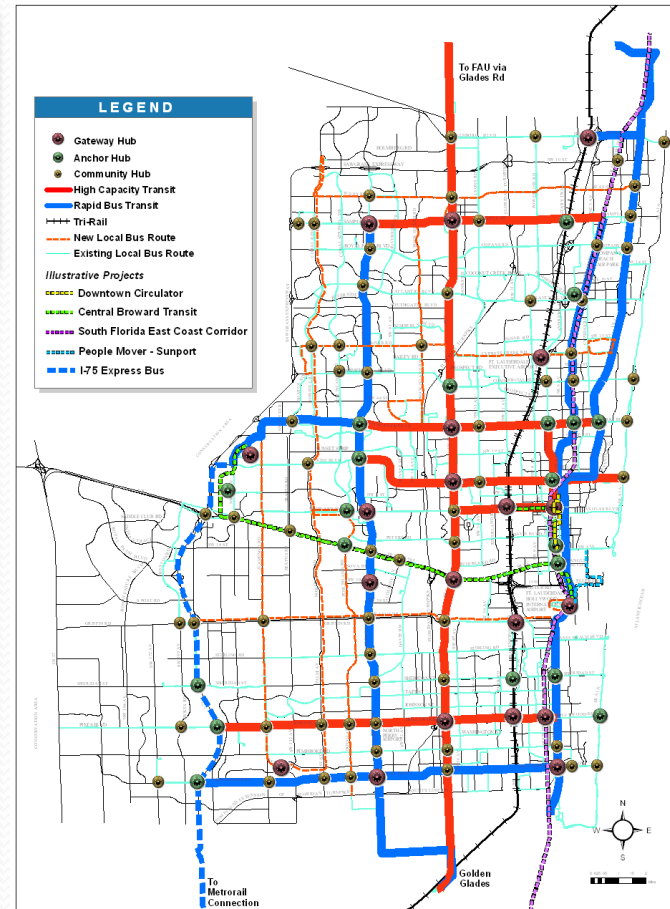




# 2035 Long Range Transportation Plan



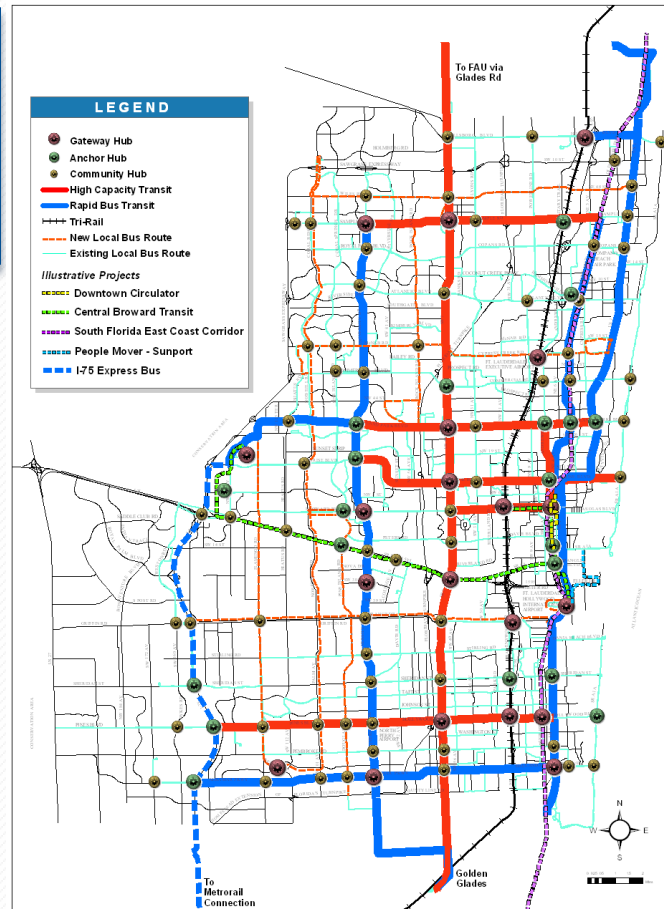
**Mobility  
Gateway Hubs \$8.2m**



# 2035 Long Range Transportation Plan



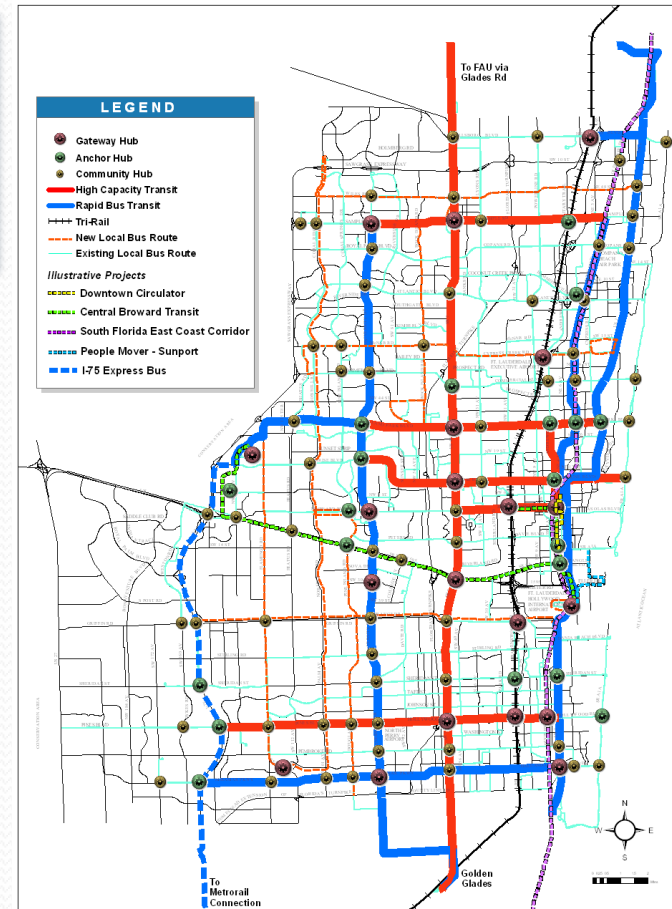
**Mobility**  
**Anchor Hubs \$1.9m**



# 2035 Long Range Transportation Plan



Mobility  
Community Hubs \$57k





# Livability Planning Initiatives

## Gateway Hub – Prototype <http://browardmpo.org/mpo/Livability.html>



Aesthetics



Investment



Economy  
& Environment

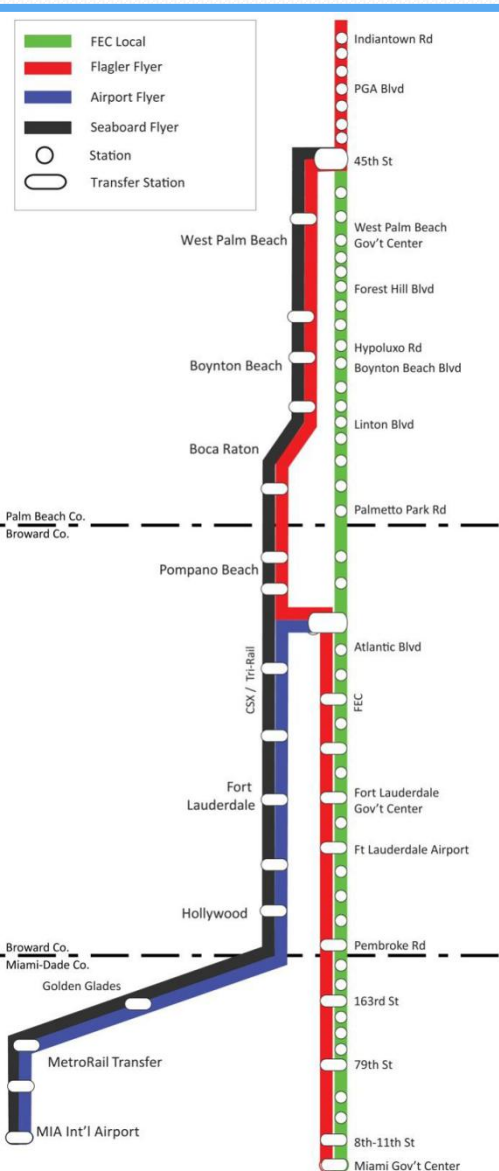
### Gateway Mobility Hub

**Mobility Hubs** are places where a majority of people interacts with the multi-modal transportation system with frequent transit service and high development potential. They are places of connection for walking, biking, park-n-ride, transit, carpooling, and, depending on the type of Mobility Hub, can also provide direct connections to concentrated activities such as housing, commercial, office, and entertainment.

A **Gateway Hub** is an active area with connections to high capacity transit surrounded by higher density mixed use developments including downtown areas and transit-oriented developments (TODs). Scan your mouse across the icons in this panel and in the picture above to learn more about the components of a Gateway Hub.



# Regional Transportation / Land Use



## South Florida East Coast Corridor

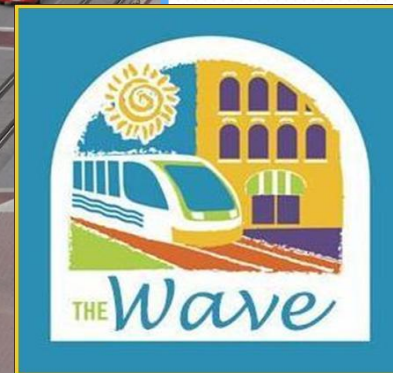
- Regional transit
- Access to employment centers
- Supports east/west connections

## Downtown Fort Lauderdale Streetcar

- Exploring operating options
- Future connections to Tri-Rail Station and Airport

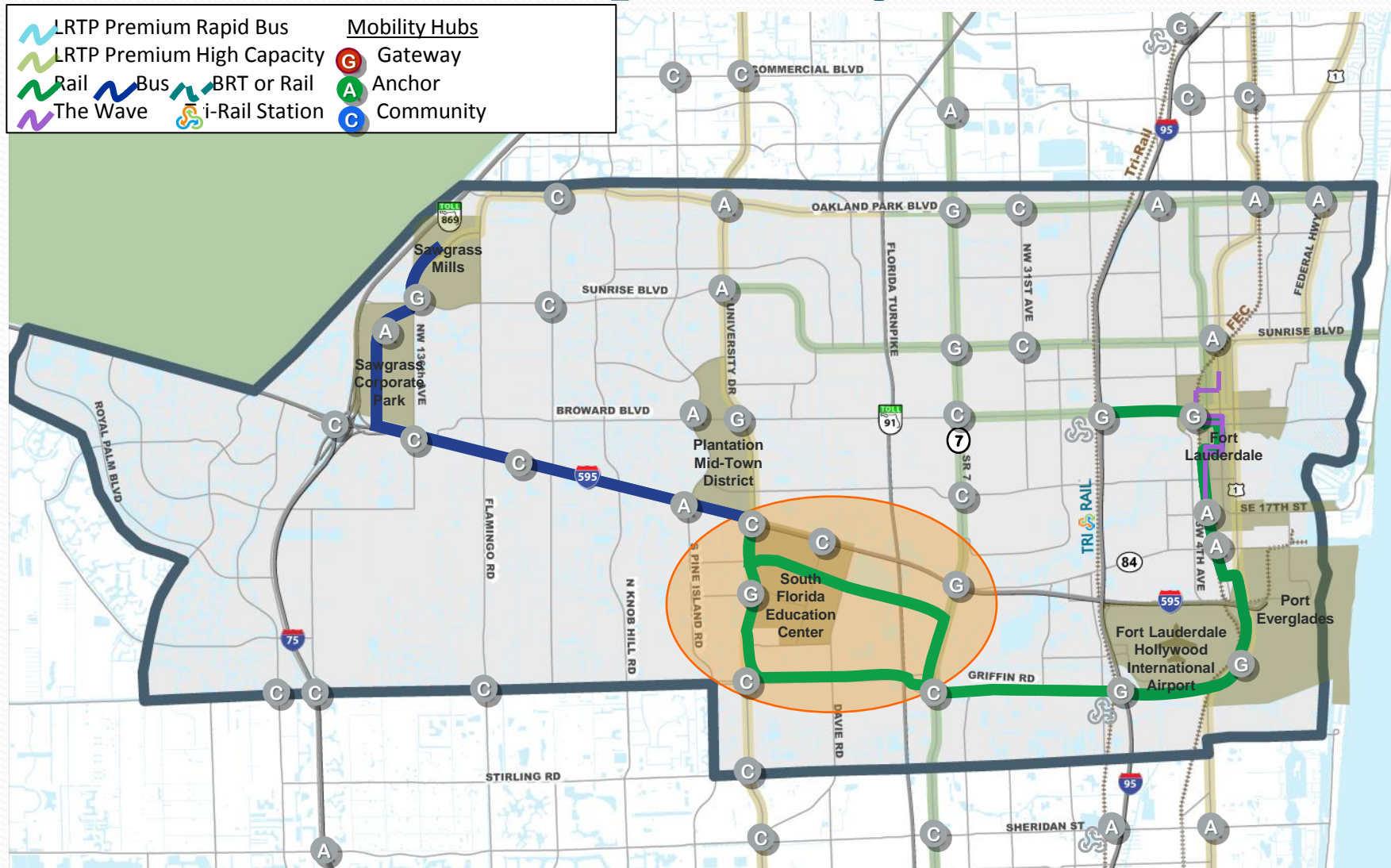
## Collaboration

- Regional Long Range Transportation Plan
- Central Broward East/West Transportation
- Oakland Park Boulevard Corridor
- Broward Boulevard Corridor



The WAVE in front of Broward County Government Center

# Central Broward East-West Transit Draft Environmental Impact Study



**Gregory Stuart**  
**Broward MPO**  
**Executive Director**  
**954-876-0033**  
**STUARTG@browardmpo.org**